

## 3. Disassembly and Reassembly

### 3.1 Precautions when replacing parts

#### 3.1.1 Precautions when assembling and disassembling

- \* Use only approved Samsung spare parts. Ensure that part number, product name, any voltage, current or temperature rating are correct. Failure to do so could result in damage to the machine, circuit overload, fire or electric shock.
- \* Do not make any unauthorized changes or additions to the printer, these could cause the printer to malfunction and create electric shock or fire hazards.
- \* Take care when dismantling the unit to note where each screw goes. There are 19 different screws. Use of the wrong screw could lead to system failure, short circuit or electric shock.
- \* Do not disassemble the LSU unit. Once it is disassembled dust is admitted to the mirror chamber and will seriously degrade print quality. There are no serviceable parts inside.
- \* Regularly check the condition of the power cord, plug and socket. Bad contacts could lead to overheating and fire. Damaged cables could lead to electric shock or unit malfunction.

#### 3.1.2 Precautions when handling PBA

Static electricity can damage a PBA, always use approved anti-static precautions when handling or storing a PBA.

##### >> Precautions when moving and storing PBA

1. Please keep PBA in a conductive case, anti-static bag, or wrapped in aluminum foil.
2. Do not store a PBA where it is exposed to direct sunlight.

##### >> Precautions when replacing PBA

1. Disconnect power connectors first, before disconnecting other cables
2. Do not touch any soldered connections, connector terminals or other electronic parts when handling insulated parts.

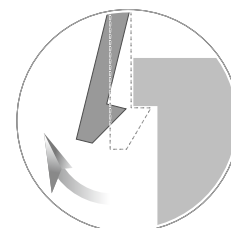
##### >> Precautions when checking PBA

1. Before touching a PBA, please touch other grounded areas of the chassis to discharge any static electrical charge on the body.
2. Take care not to touch the PBA with your bare hands or metal objects as you could create a short circuit or get an electric shock. Take extra care when handling PBAs with moving parts fitted such as sensors, motors or lamps as they may get hot.
3. Take care when fitting, or removing, screws. Look out for hidden screws. Always ensure that the correct screw is used and always ensure that when toothed washers are removed they are refitted in their original positions.

#### 3.1.3 Releasing Plastic Latches

Many of the parts are held in place with plastic latches. The latches break easily; release them carefully.

To remove such parts, press the hook end of the latch away from the part to which it is latched.



## 3.2 Screws used in the printer

The screws listed in the table below are used in this printer. Please ensure that, when you disassemble the printer, you keep a note of which screw is used for which part and that, when reassembling the printer, the correct screws are used in the appropriate places.

Part Code	Location	Description	Qty
6003-000196	Cassette	SCREW-TAPTYPE;PWH,+ ,B,M3,L10,NI PLT,SWRCH18A	2
6003-000261		SCREW-TAPTYPE;BH,+ ,-,B,M3,L6,ZPC(WHT),SWRCH18A,-	1
6003-000264		SCREW-TAPTYPE;PWH,+ ,-,B,M3,L6,ZPC(WHT),SWRCH18A,-	1
6003-000196	Fuser	SCREW-TAPTYPE;PWH,+ ,B,M3,L10,NI PLT,SWRCH18A	1
6003-000269		SCREW-TAPTYPE;BH,+ ,-,S,M3,L6,ZPC(WHT),SWRCH18A,-	5
6003-000282		SCREW-TAPTYPE;BH,+ ,-,B,M3,L8,ZPC(BLK),SWRCH18A,-	4
6006-001078		SCREW-TAPTYPE;PH,+ ,WSP,B,M3,L10,ZPC(WHT),SWRCH18A	1
6002-000308	Frame Main	SCREW-TAPTYPE;PH,+ ,-,B,M2.6,L6,ZPC(WHT),SWRCH18A,-	4
6003-000196		SCREW-TAPTYPE;PWH,+ ,B,M3,L10,NI PLT,SWRCH18A	32
6003-000282		SCREW-TAPTYPE;BH,+ ,-,B,M3,L8,ZPC(BLK),SWRCH18A,-	2
6003-000269	Drive Main Bracket	SCREW-TAPTYPE;BH,+ ,-,S,M3,L6,ZPC(WHT),SWRCH18A,-	7
6003-000264	Frame Base Pick up	SCREW-TAPTYPE;PWH,+ ,-,B,M3,L6,ZPC(WHT),SWRCH18A,-	1
6003-000282	LSU	SCREW-TAPTYPE;BH,+ ,-,B,M3,L8,ZPC(BLK),SWRCH18A,-	9
6003-000282	LSU Sub LD	SCREW-TAPTYPE;BH,+ ,-,B,M3,L8,ZPC(BLK),SWRCH18A,-	2
6003-000196	Cover-Top	SCREW-TAPTYPE;PWH,+ ,B,M3,L10,NI PLT,SWRCH18A	5
6003-000264	Cover-Front	SCREW-TAPTYPE;PWH,+ ,-,B,M3,L6,ZPC(WHT),SWRCH18A,-	3
6003-000282	Toner Cartridge	SCREW-TAPTYPE;BH,+ ,-,B,M3,L8,ZPC(BLK),SWRCH18A,-	10
6003-000002	MainLine	SCREW-TAPTYPE;PWH,+ ,B,M3,L10,CBLACK,SWRCH18A	8
6003-000196		SCREW-TAPTYPE;PWH,+ ,B,M3,L10,NI PLT,SWRCH18A	11
6003-000269		SCREW-TAPTYPE;BH,+ ,-,S,M3,L6,ZPC(WHT),SWRCH18A,-	9
6003-000282		SCREW-TAPTYPE;BH,+ ,-,B,M3,L8,ZPC(BLK),SWRCH18A,-	4
6003-000301		SCREW-TAPTYPE;BH,+ ,S,M4,L6,ZPC(WHT),SWRCH18A	1

## 3.3 Cover

### 3.3.1 Front Cover

1. Take off the cassette.



2. Take off the front cover by removing both hooks.



### 3.3.2 Top Cover

1. Open the front cover.  
Remove 2 screws on front side.



2. Open the rear cover.  
Remove 2 screws on back side.  
And lift the top cover up.



**Caution :**

When replacing the top cover, the exit unit is easy to break way from the SET.  
To prevent this, please remove the top cover from the rear to the front.

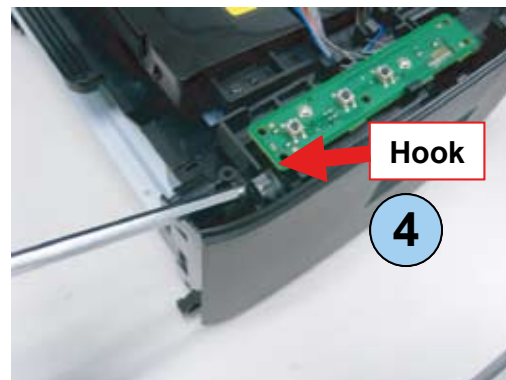
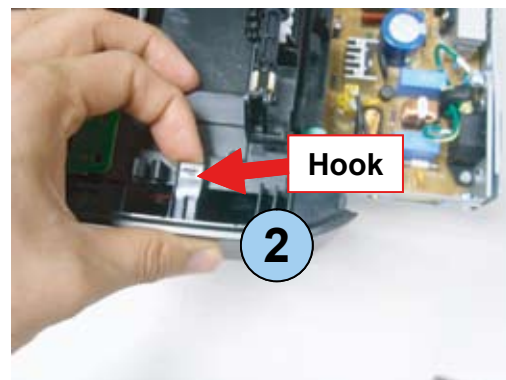
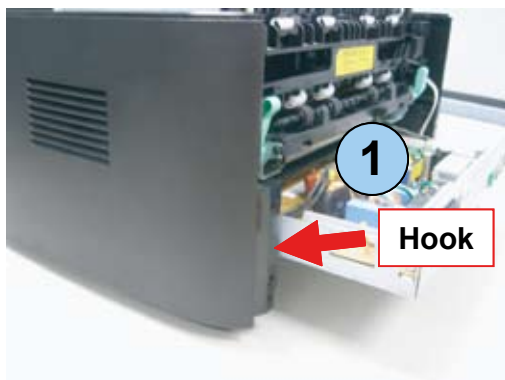
### 3.3.3 Rear Cover

1. Remove 5 screw on back side of printer.
2. Remove the rear cover.



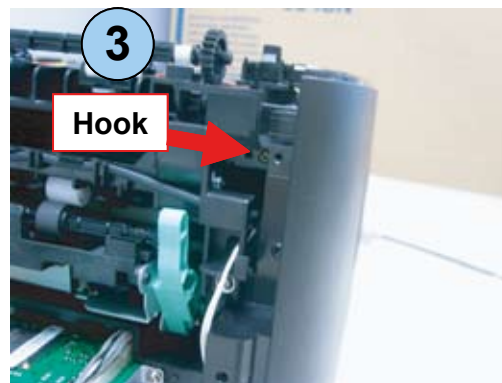
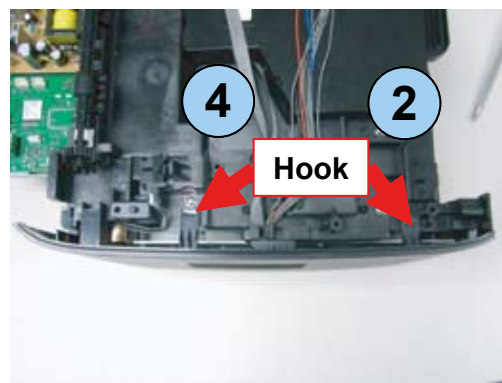
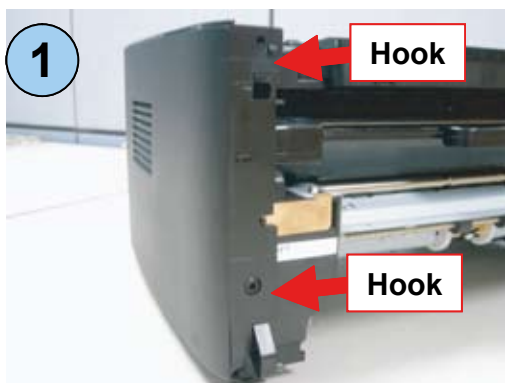
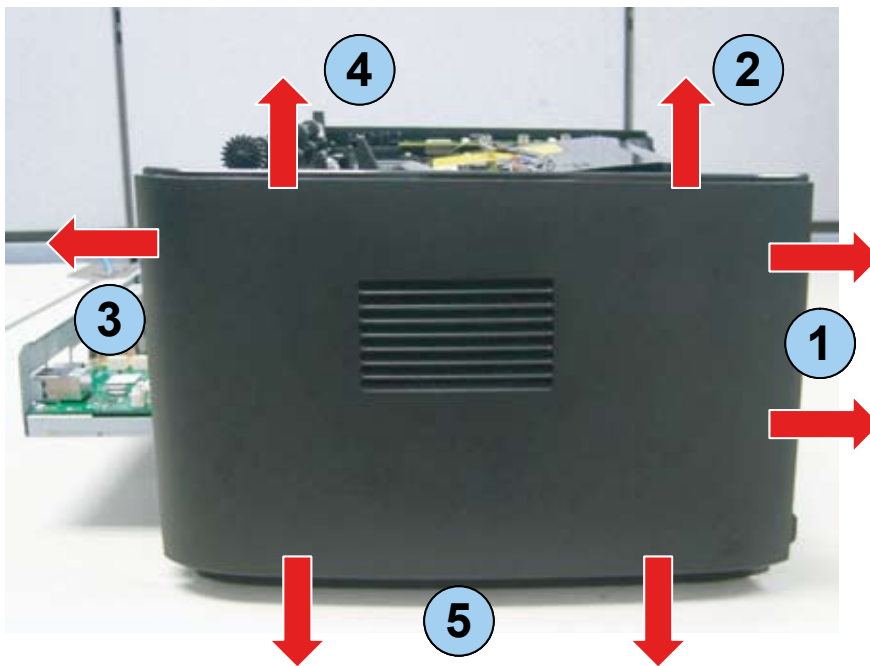
### 3.3.4 Right Cover

1. Remove the front/rear/top cover.
2. Unlatch the hook in order as shown below and release the right cover.



### 3.3.5 Left Cover

1. Remove the front/rear/top cover.
2. Unlatch the hook in order as shown below and release the left cover.



## 3.4 Fuser Unit

### 3.4.1 Whole Fuser Unit

1. Remove the rear cover.
2. Remove 4 screws.



3. Unplug the 2 connectors from SMPS board and Main board.
4. Take off the Fuser unit.



Caution : Take care not to break the actuator-exit

### 3.4.2 Main Service parts of Fuser Unit

	Photo	Part code	Part name
1		6107-001802	SPRING ES
2		4713-001212 (220V)	LAMP-HALOGEN
3		JC39-00819A	HARNESS FUSER JOINT
4		JC39-01082A	HARNESS-FUSER AC
5		JC67-00415A	CAP FUSER LAMP L
6		JC67-00414A	CAP FUSER LAMP R
7		6107-001165	SPRING TS
8		JC66-02364A	ACTUATOR EXIT

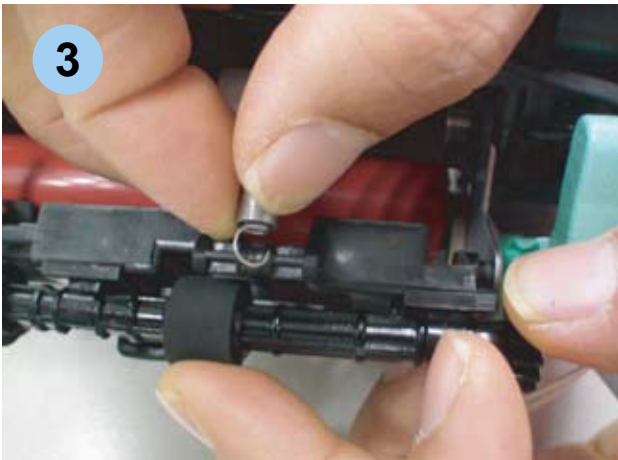
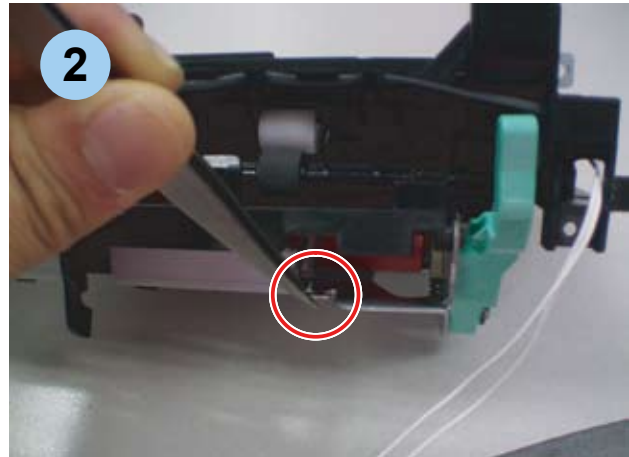
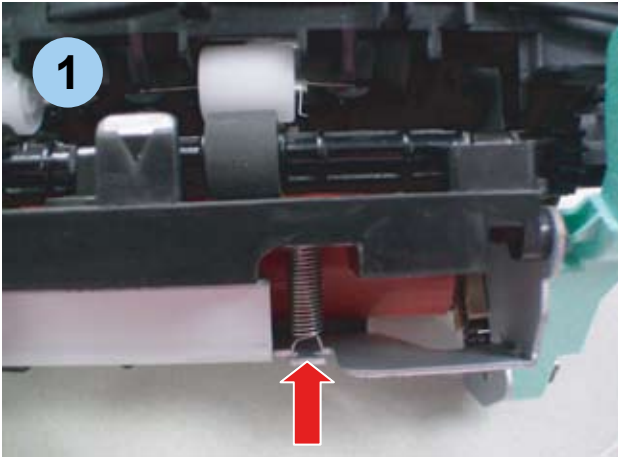


	Photo	Part code	Part name
9		JC61-00581A	HOLDER ACTUATOR
10		JC66-02365A	LAVER LINK JAM L
11		JC66-02366A	LEVER LINK JAM R
12		4712-001031	THERMOSTAT
13		JC61-03450A	GUIDE-INPUT
14		JC61-03685A	GUIDE CLAW
15		6107-001800	SPRING TS
16		JC72-40361A	PMO ROLLER EXIT
17		JC61-70976A	SPRING ETC FUSER EXIT
18	NYOGEL 788	0205-001003	GREASE BEARING

### 3.4.3 Replacing the Main Service part of Fuser Unit

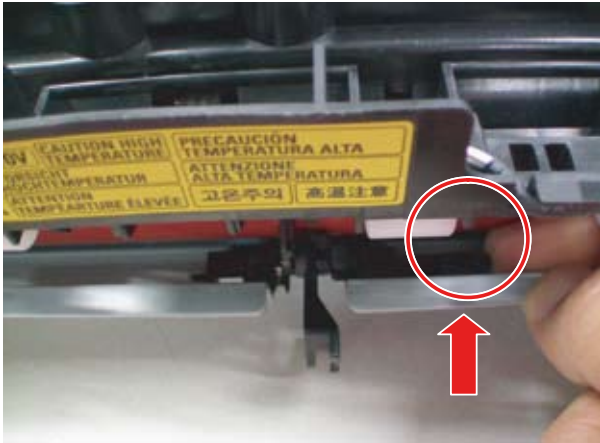
#### 3.4.3.1 Spring-Es

Separate it as take up the circle-area of Spring-Es from hook.

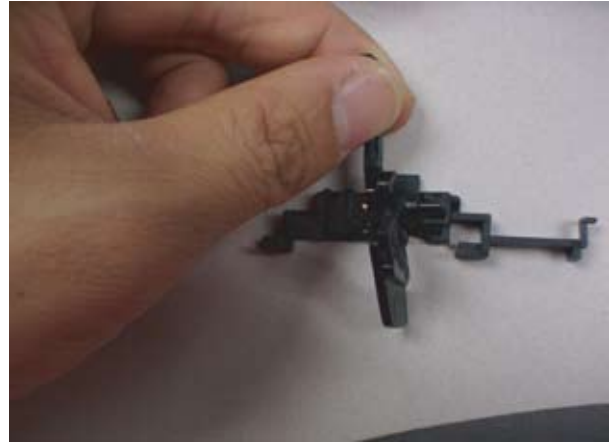


### 3.4.3.2 Actuator-Exit and Holder-Actuator

1. Lift up the checking point and push to right side, and then disassemble.



3. Disassemble Spring-Ts from the actuator.



**Caution :**  
Do not touch the roller surface of fuser inside

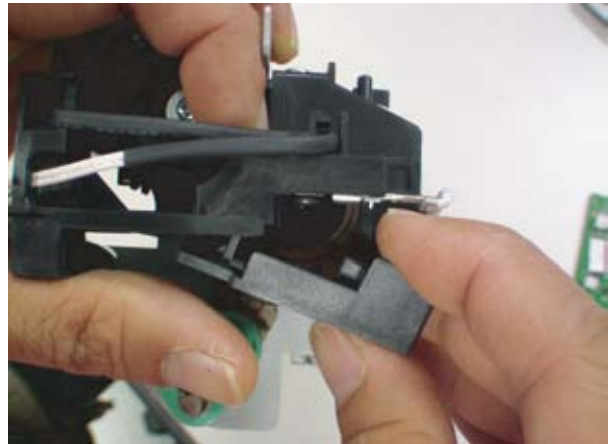
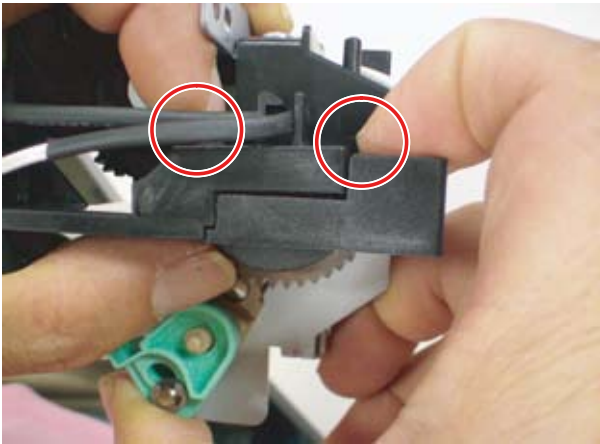
2. Disassemble Actuator-Exit from Holder-Actuator.



### 3.4.3.3 Cap-Fuser lamp R/Cap-Fuser Lamp L

Press the hook end of latch away from the cover-fuser to which it is latched and separate it

#### - Cap-Fuser Lamp L



#### - Cap-Fuser Lamp R



Caution : Don't bend the stud

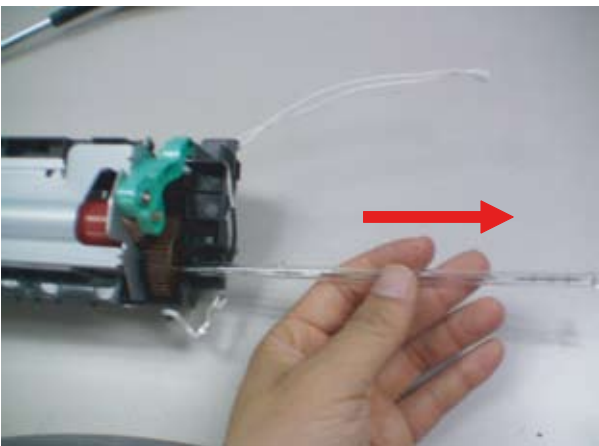


### 3.4.3.4 Lamp Halogen

1. Pull out the harness (Harness-Fuser Joint, Harness-Fuser AC) which is connected at Fuser Lamp Halogen. And loose the two screws ( Left side, Right side each one ) in the red circle.

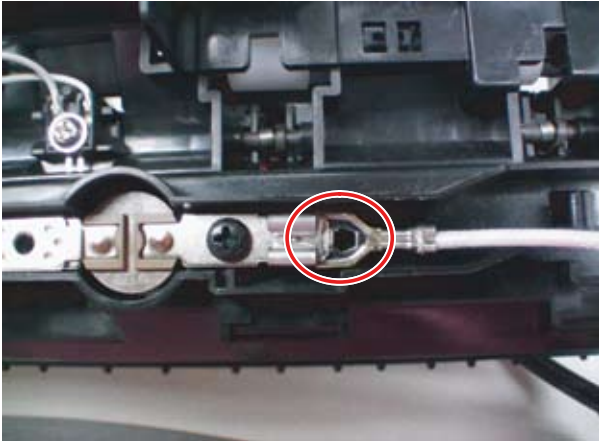


2. Release the Lamp Halogen.



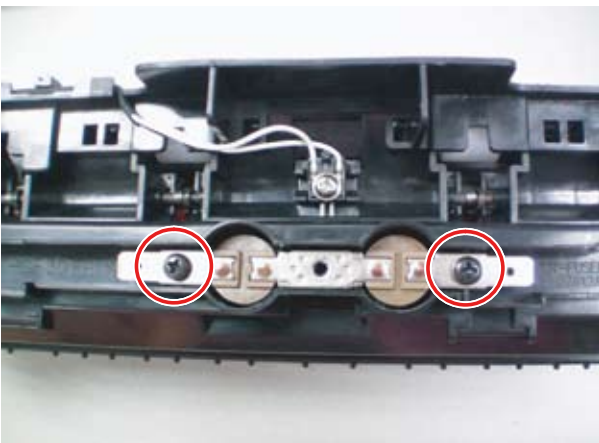
### 3.4.3.5 Harness-Fuser Joint and Harness-Fuser AC

1. Pull out the connected part from L (Refer to 3.4.3.4 Lamp-Halogen disassemble method).
2. Pull out the connected part from Thermostat. And separate the harness from the Fuser.



### 3.4.3.6 Thermostat

Loose the two screws in the red circle and separate it.



### 3.4.3.7 Lever Link Jam R/ Lever Link Jam L

After removing the E-ring and Washer-Plain , separate the lever.

#### - Cap-Fuser Lamp R

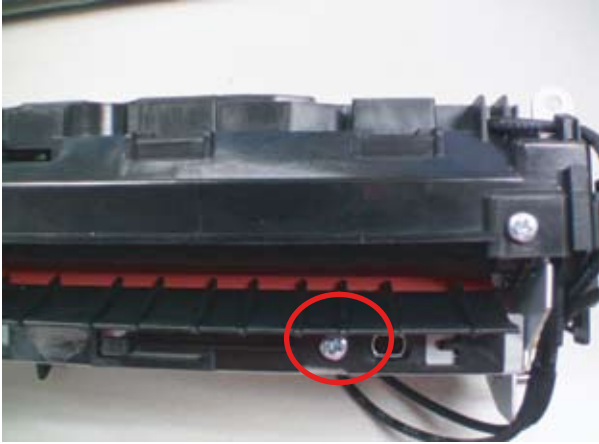


#### - Cap-Fuser Lamp L



### 3.4.3.8. Guide Input

After loose the fixed one screw on Guide Input, Disassemble it.



### 3.4.3.9. Pmo Roller Exit / Spring Etc Fuser Exit

1. Disassemble Spring-Etc Fuser Exit.



2. Disassemble Pmo-Roller Exit.

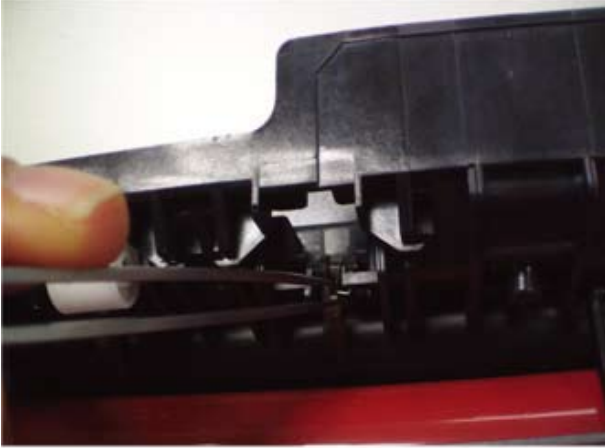


**Caution :**  
Do not touch the roller surface of fuser inside

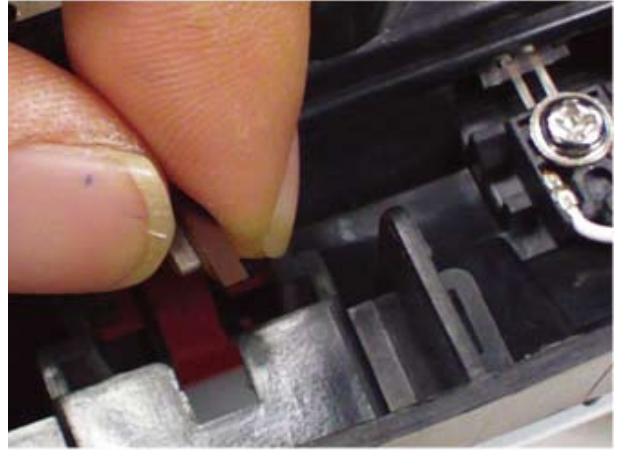


### 3.4.3.10 Guide Claw / Spring Ts(6107-001800)

1. Disassemble Spring-Ts.



3. Keep holding and push to underneath.



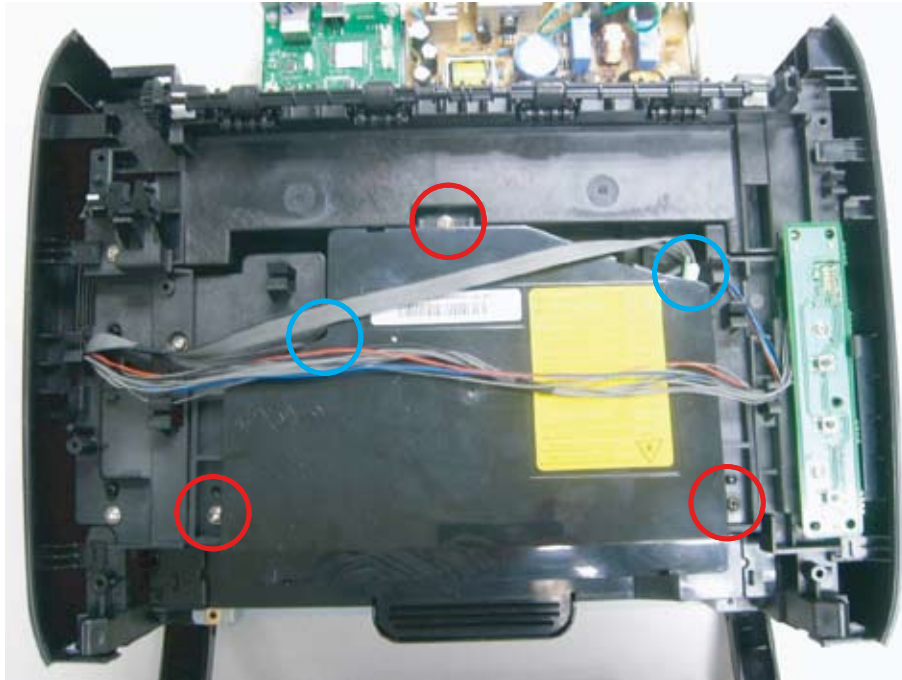
2. Turn around the Guide-claw.



**Caution :**  
Do not touch the roller surface of fuser inside.

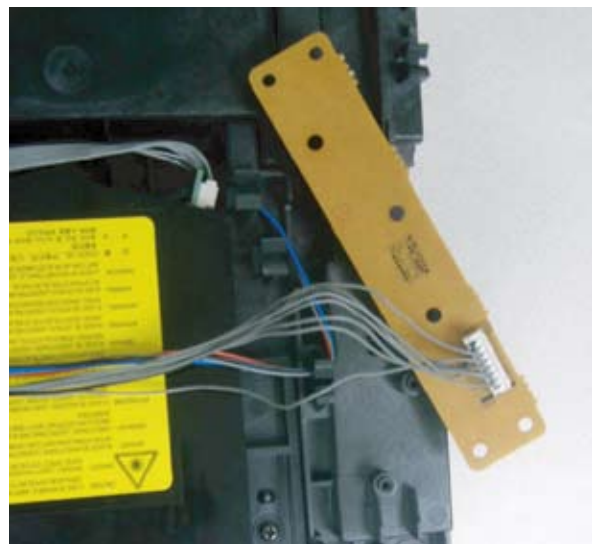
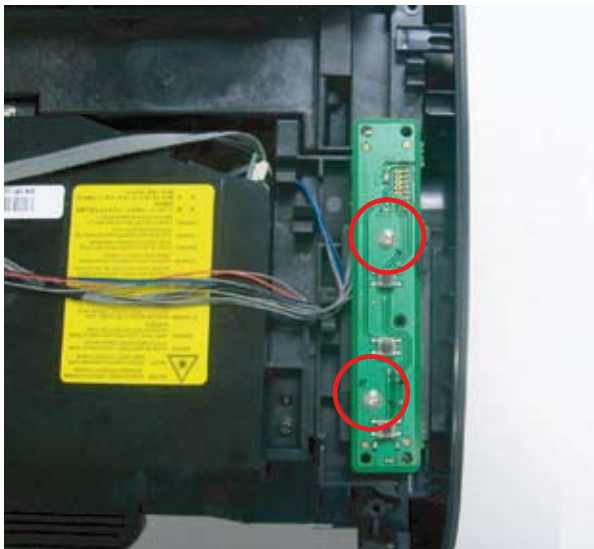
## 3.5 LSU Unit

1. Remove the front/ top/ rear cover. (refer to 3.3 cover)
2. Lift the LSU unit off by removing 3 screws and 2 connectors.



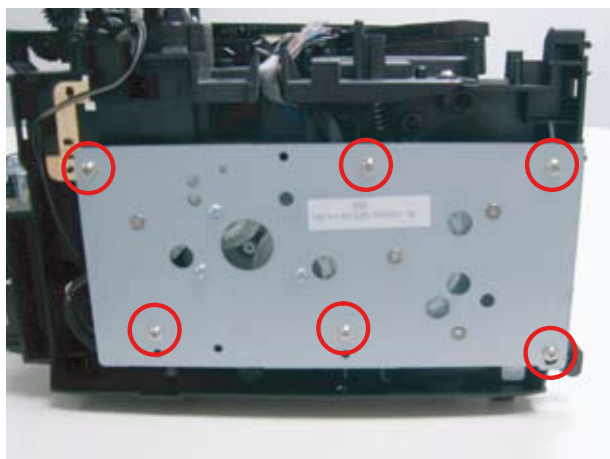
### 3.6 OPE PBA

1. Remove the top cover.
2. Remove 2 screws.
3. Take off the OPE PBA after unplugging 1 connector.



### 3.7 Drive Unit

1. Remove the left cover. (refer to 3.3 cover)
2. Remove 6 screws.
3. Take off the Drive Unit after removing 1 connector.

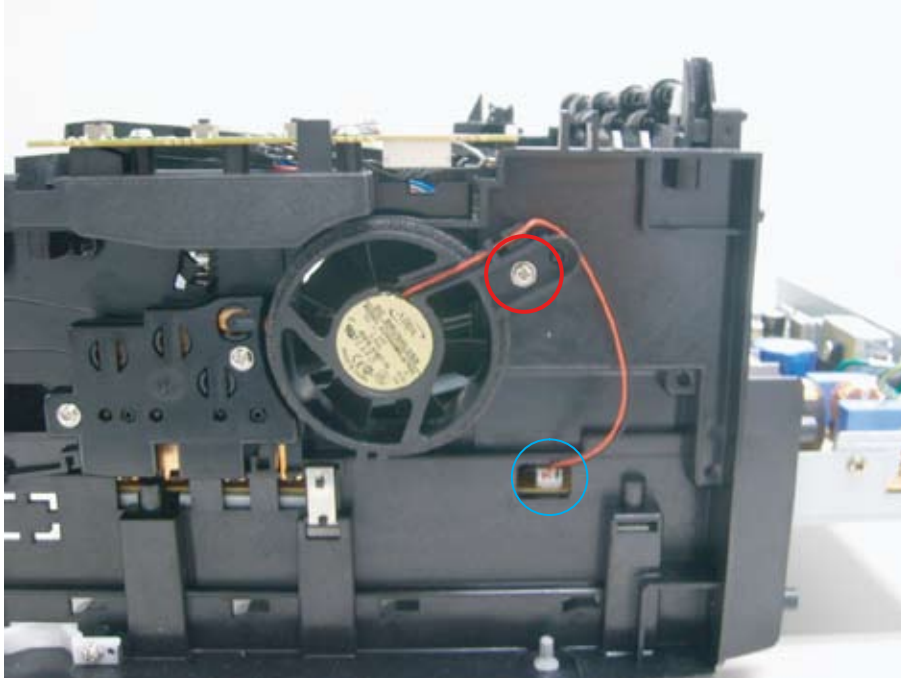


**Note**

Remove the motor of drive unit after removing 4 screws if necessary.

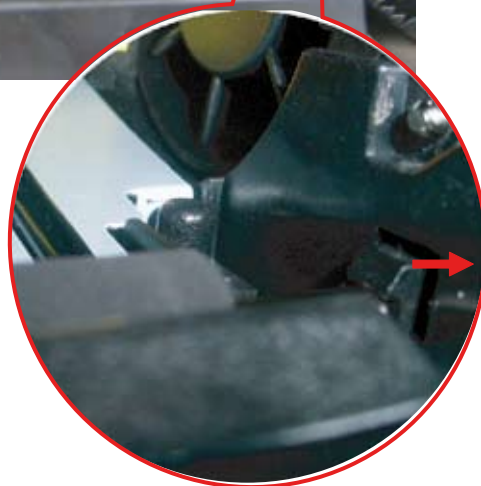
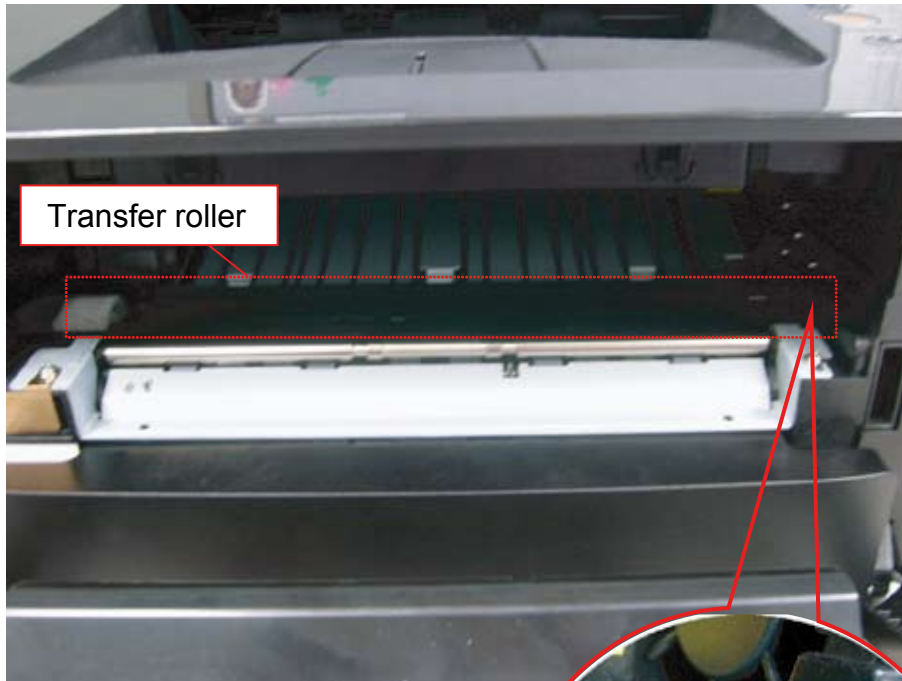
## 3.8 FAN

1. Remove the right cover. (refer to 3.3 cover)
2. Remove the FAN after removing 1 screw and 1 connector.



## 3.9 Transfer Roller

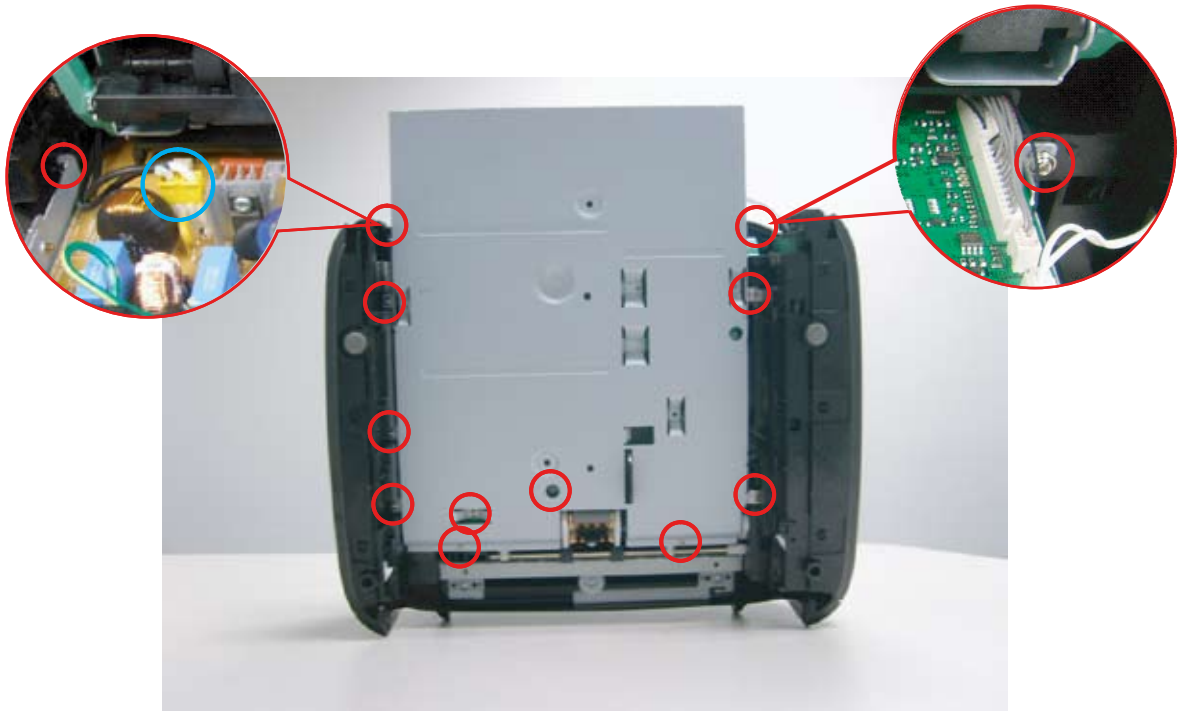
1. Open the front cover.
2. Take out the toner cartridge.
3. Take off the transfer roller by release its right shaft from hook.



**Cautions :**  
Don't touch the surface of transfer roller.

### 3.10 Main PBA and SMPS/HVPS board

1. Take out the Cassette unit.
2. Remove rear cover. (refer to 3.3.3 rear cover)
3. Remove 11 screws (bottom x 9 , rear x 2 ) and 1 connector.



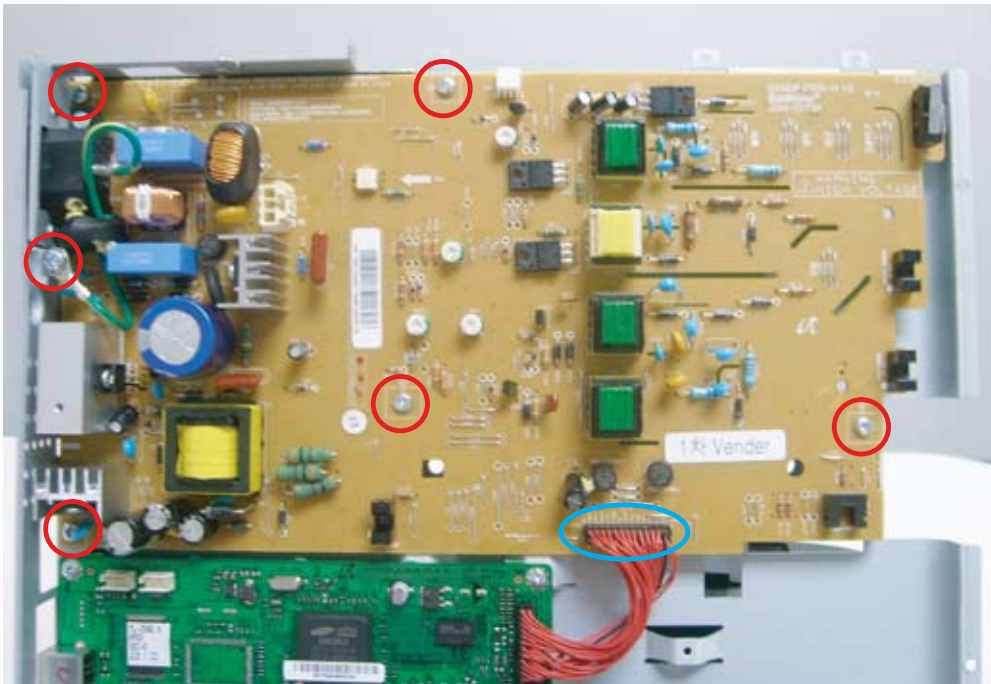
4. Lift the board shield up slightly and unplug the connector as shown below.



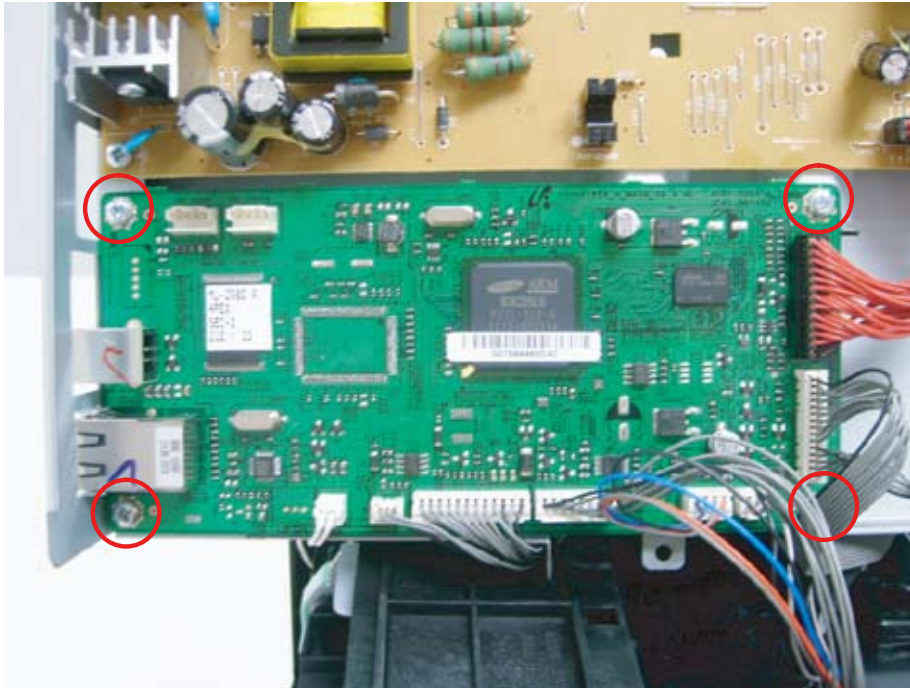
5. Turn the shield over as shown below.



6. Take off the SMPS/HVPS board after removing 6 screws and connector.



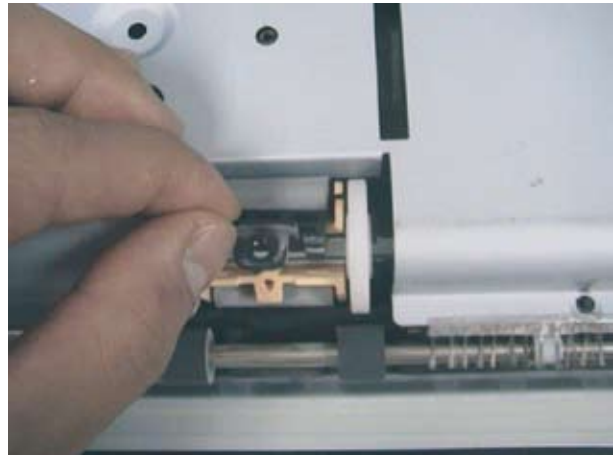
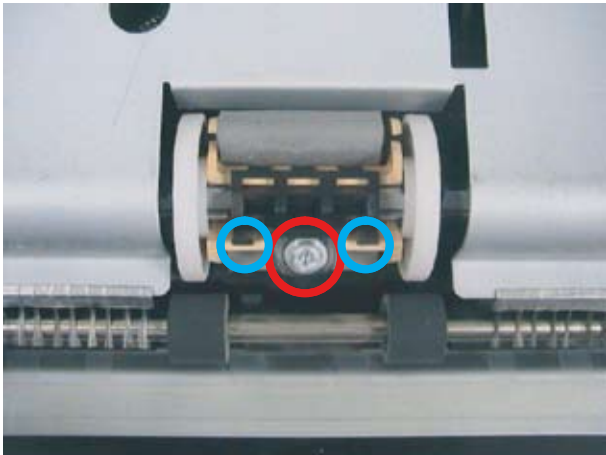
7. Take off the Main PBA after removing 4 screws and all connectors.



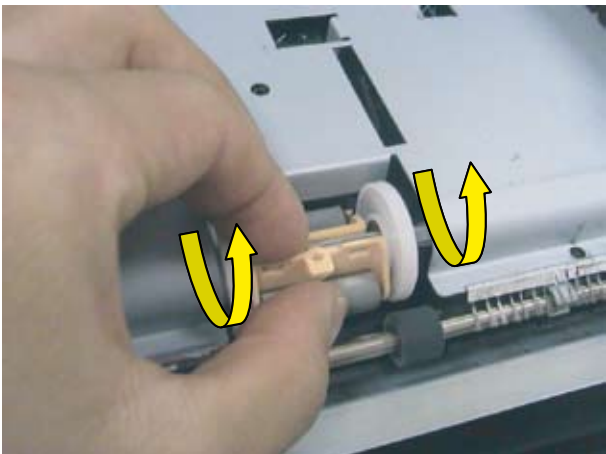


### 3.11 Pick up roller

1. Take out the Cassette unit.
2. Turn the printer over.
3. Remove 1 screw. Release the holder pick up by unlatching 2 hooks.



4. Turn and release the pick up roller.



### 3.12 Cassette holder pad

1. Take out the Cassette unit.



2. Take off the holder pad by unhooking both latches.

