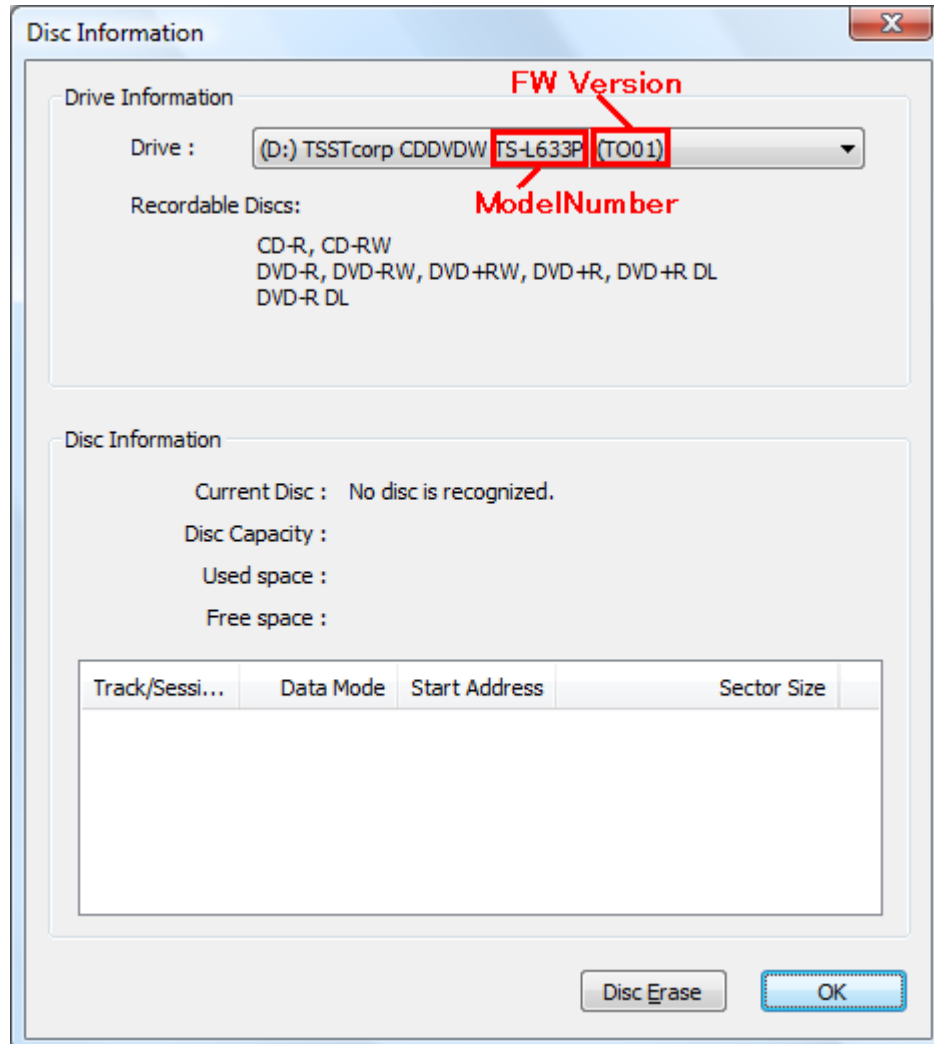


1. How to confirm FW

- Before update FW, make sure ODD number and FW version.
- Run TOSHIBA disk Creator
- Select 'Audio CD'
- Select 'Disk' - 'Disk Information'

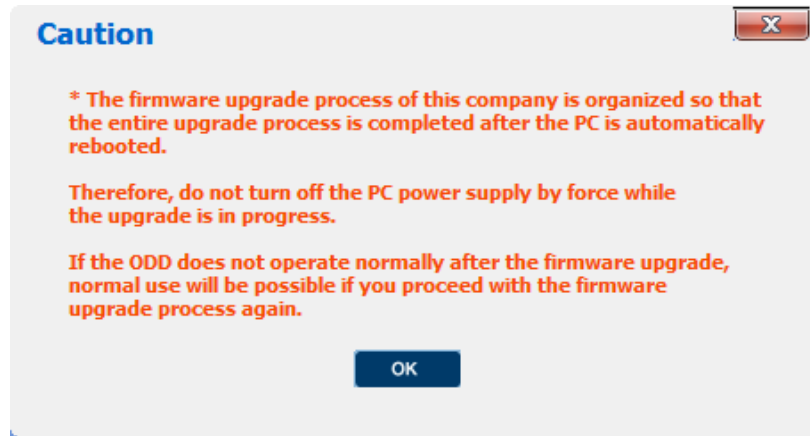


- If 'TS-L633A (TO01)' or 'TS-L633P (TO01)', can update FW from 'TO01' to 'TO03' (got to Update FW.).
If other ODD number, or FW version is latest one, can not update FW.
(end)

2. Update FW

- Notice
 - i. Must not power off during update the FW.
 - ii. AC-Adapter must be used in the update process.
 - iii. If ODD is not compatible or FW is latest then update tool is stop.
- Update FW (Windows)
 - i. load '633ATO03WIN.zip' or '633PTO03WIN.zip'.

- ii. decompress '633ATO03WIN.zip' (created 'TSL633A_TO03.exe') or '633PTO03WIN.zip' (created 'TSL633P_TO03.exe')
- iii. load 'TSL633A_TO03.exe' or 'TSL633P_TO03.exe' to target unit.
- iv. run 'TSL633A_TO03.exe' or 'TSL633P_TO03.exe' on windows.
- v. display caution message, press OK.



- vi. will update FW to latest one, display message, press OK, and system will reboot.

