

# User Manual

HC-350A



1. Introduction.....	3
1.1 Application.....	3
1.2 Power Supply.....	3
1.3 Caution.....	3
1.4 Key Features.....	4
2. Whole View and Details of Camera.....	4
2.1 Front View of Camera.....	5
2.2 Back View of Camera.....	5
2.3 Bottom View of Camera.....	6
3. Quick Operation.....	6
3.1 Load Battery.....	6
3.2 Remoter.....	6
3.3 Power On.....	7
3.3.1 Test.....	7
3.3.2 ON.....	8
3.4 Screen Information Display.....	8
3.5 Settings Menu.....	8
3.5.1 Camera Menu.....	9
3.5.2 Video Menu.....	10
3.5.3 System Menu.....	10
3.5.4 Time lapse setting.....	10
4. Firmware Upgrade.....	11
5. Specification.....	12
6. Packing List.....	13

# 1. Introduction

Thank you for choosing our highly qualified Scouting Trail Camera. This 16MP HD digital camera was totally R&D by our diligent and smart engineers based on feedbacks and requirements from customers globally.

Please read this introduction carefully before the camera using.

## 1.1 Application

This digital camera is an ideal product for housing security, warehouse surveillance, and monitoring wild animals with its camouflage appearance and nice shape. It is convenient to install or fasten, could be used to take photographs manually and carry on long-time videos in Test mode.

- a. Instant surveillance camera for home, office, construction site, and warehouse, etc
- b. Motion-triggered infra-red night vision surveillance;
- c. Animal observation and hunting;
- d. Plant observation.

## 1.2 Power Supply

### a. AA Alkaline batteries

This camera can either work with 8x AA Alkaline batteries or 9V DC power.

Please note that the voltage of rechargeable AA batteries (1.2V) is insufficient to power this device.

### b. Solar Panel

To bring users better using experience, our engineers designed this camera to be able to work with most standard 9V lithium battery build-in solar panels.

We strongly recommend the camera works with the original solar panel.

### c. Power Adapter

This camera can also be powered by an external 9V DC adapter. Recommend to remove the alkaline batteries when power adapter is used, to avoid surcharging.

## 1.3 Caution

- a. Please insert the TF card and SIM card when the power switch is on OFF position before testing the camera.
- b. Please do not insert or take out the TF-card when the power switch is on ON position.
- c. It is recommended to format the TF-card by the camera when used at the first time.
- d. The camera will be in USB mode when connected to a USB port of a computer. In this case, the TF-card functions as a removable disk.
- e. Please ensure sufficient power when having firmware upgrade, otherwise the upgrade process could be interrupted incorrectly. If any fault occurs after improper upgrading process, the camera may stop function properly.

## 1.4 Key Features

1	Built-in 2.0" TFT color screen to review photos and videos on camera
2	36pcs IR LEDs for flash range as 20 meters
3	Programmable 8/12/16 Megapixel high-quality resolution
4	Color pictures during daylight; black and white at night
5	Adjustable PIR sensitivity; HIGH, MID, LOW
6	Impressive quick trigger time: 0.5s
7	Multi-shot pictures; 1,3,6,9
8	Adjustable delay between motions; 1/5/10/30 seconds/minutes
9	Adjustable video length: 10/30/60/90 seconds
10	With 6pcs AA alkaline batteries, the longest standby time is up to 6 months
11	Available operation temperature: -20°C to 60°C
12	With specified Timer, camera can be programmed to work only during preset time period every day
13	Stamp the date, time, temperature and longitude and latitude on each picture
14	Sound Recording
15	Supports 3G/2G SIM card to get real-time photos; IMEI available.
16	With MMS/SMTP function, camera can transmit photos to 1-3 preset mobile phones or 1-3 email per trigger
17	SMS to enable camera to shoot a photo and send back instantly, ask camera to work or not, get the number of taken picture and battery status

## 2. Whole View and Details of Camera

### 2.1 Front View of Camera



## 2.2 Back View of Camera



## 2.3 Bottom View of Camera



## 3. Quick Operation

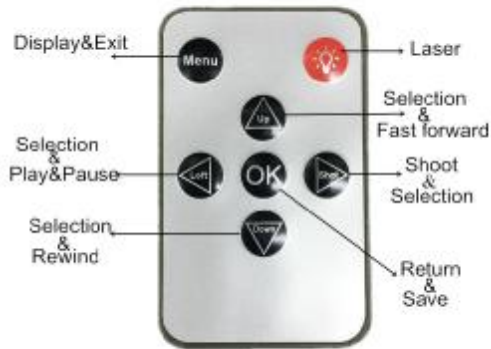
### 3.1 Load Batteries



8X AA Batteries

### 3.2 Remoter

The infrared remote is an input device of the camera and primarily used for customer settings. Its maximum remote distance is 9 meters.



Press the punctuation “” for laser light.

Note (Under TEST mode):

1. Press “Shot” directly, the camera will take picture or video directly.
2. Press “OK” directly, the captured picture or video can be viewed.
3. Viewing picture, press “Up” or “Down”.
4. Viewing video, press “Left” to start, again to stop, press “OK” to return.

### 3.3 Power on



Slide Power Switch from OFF to Test (for setting) then to ON position, the camera powers on. (Please don't slide the power switch from OFF to ON directly)

#### 3.3.1 TEST (The first way to set the menu)

In TEST mode, the screen lights up. User can do the below operations by

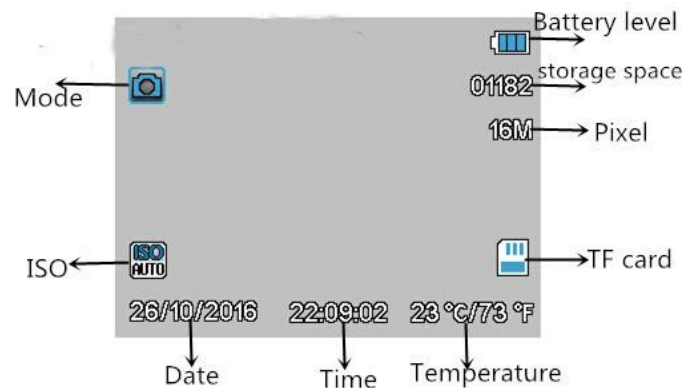
remoter:

- a. Setting Camera Menu, working mode includes camera, video and system setting
- b. Take picture or video (press Shot)
- c. View picture or video (Press OK)
- d. Check the MMS/SMTP is ON or OFF

### 3.3.2 ON

In this mode, the screen power off and remoter is useless. The camera works automatically. Will capture and send picture out if detected any motions by PIR.

### 3.4 Screen Information Display



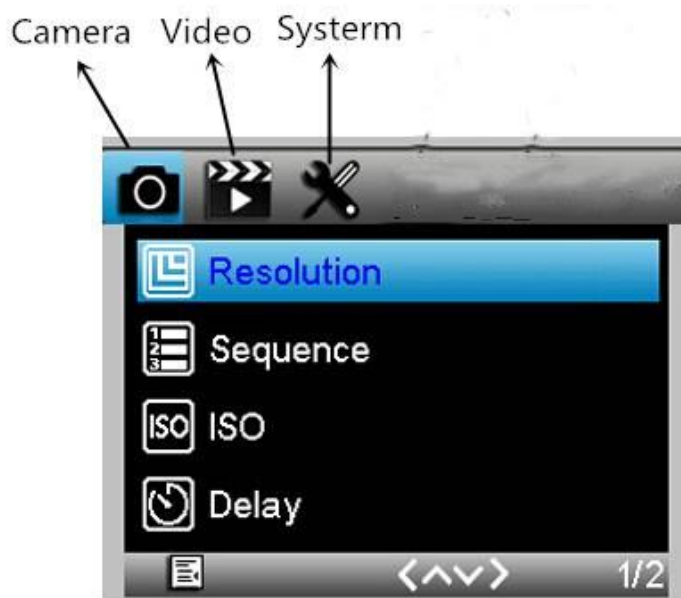
**Note:** To active its MMS or SMTP functions, the camera should find signal and SIM card firstly.

### 3.5 Settings Menu

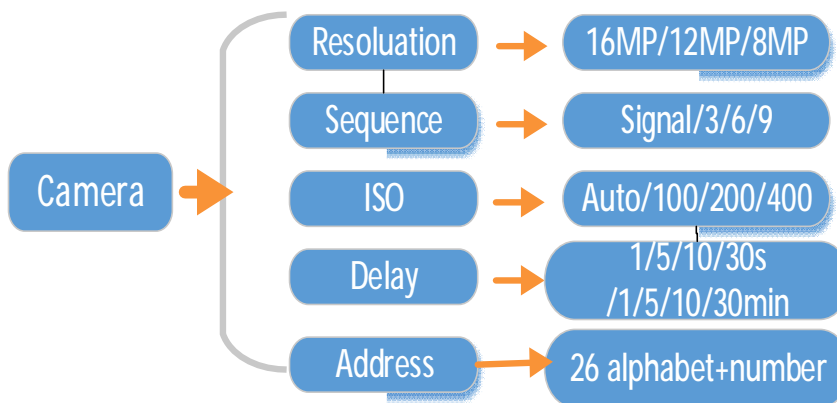
There are 3 parts setting of the camera, user can fix Camera, Video and



System menu setting by remoter;



### 3.5.1 Camera Menu



#### Description:

Menu	Content	Description
Resolution	16MP, 12MP, 8MP	Photo size
Delay	1/5/10/30 sec/min	Waiting time from the last taking
Sequence	1/3/6/9	Number of photos taken every time
ISO	Auto,100,200,400	The camera exposure level

Address	26alphabet +number	Camera ID
---------	--------------------	-----------

### 3.5.2 Video Menu

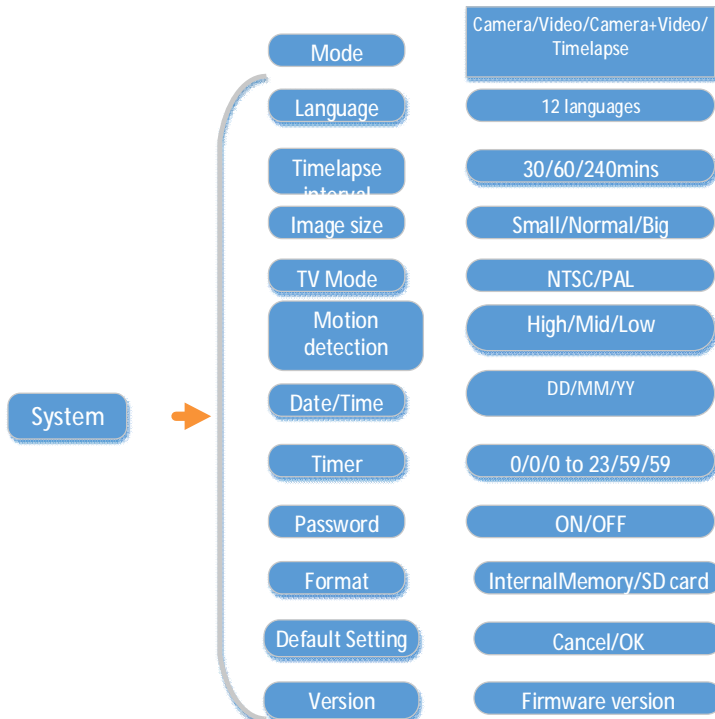
Menu	Content	Description
Resolution	1080P, 720P, WVGA, QVGA	Video size
Video Length	10S, 30S, 60S, 90S	The time length of video
Record Audio	On, Off	If On, Video sound is recorded

### 3.5.3 Time lapse setting

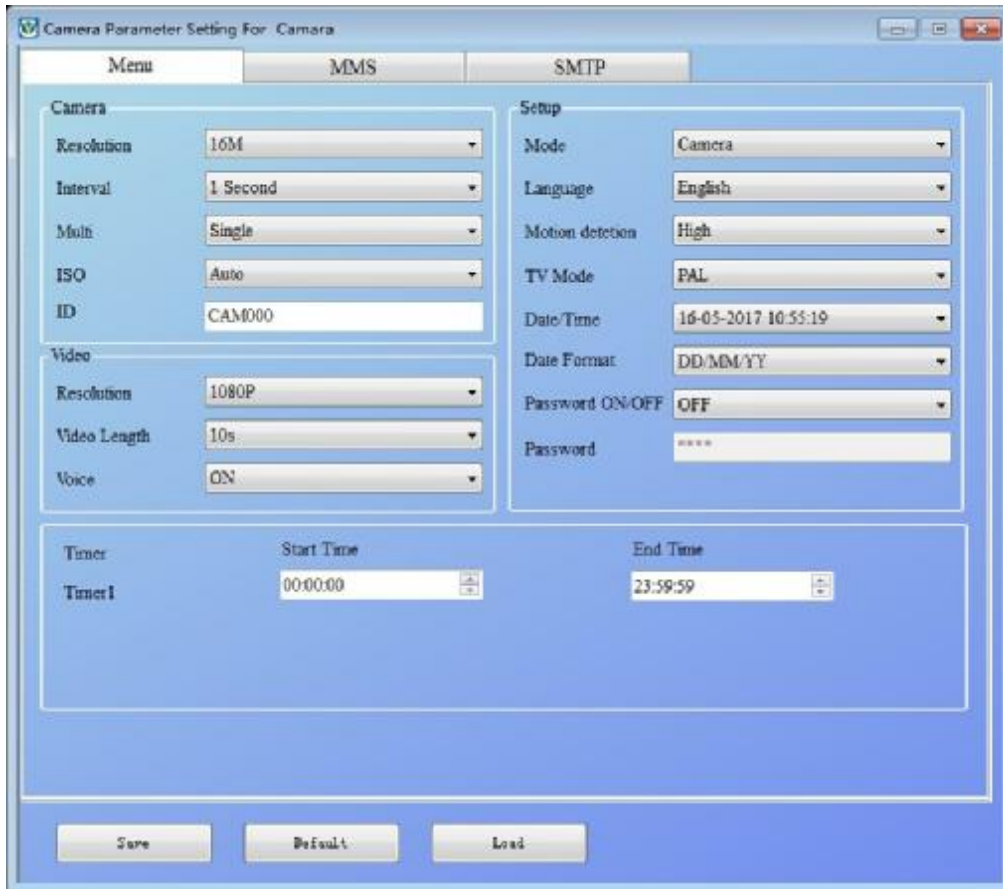
Time lapse means camera take pictures regularly no matter there is motion or not.

Working mode-TIMELAPSE, choose – TIME LAPSE INTERVAL-set the working time (30/60/240minutes selectable)

### 3.5.4 System Menu



**You also can done the Menu setting in MMSCONFIG software.**



## 4. Firmware Upgrade

This camera is equipped with an automatic upgrade function for you. Upgrading is needed only when an improved firmware is available. The operations are as following:

1. Unzip the update file
2. Copy the FWR801.bin to TF card.
3. Insert the TF card into the camera.
4. Power on the camera (Test Mode) .
5. The camera will read it and update itself automatically. When updating the camera, its screen is black and the indicator light will flash approx 10s.
6. It will come to the menu surface after upgrade successfully.
7. Delete the firmware from the TF card.(If you don't do this, the camera will upgrade every time when power on).
8. Insert the TF card into the camera for its working.

## 5. Specification

Image Sensor	5 Mega Pixels Color CMOS
Memory	SD Card to 32GB
Lens	F=3.1; FOV=90 °
Size	172mmx80mmx43.5mm
TFT Display Screen	2.0 inch
LED	Black Invisible 940nm
PIR Distance	High/Normal/Low
PIR Sensor Sight Angle	60 Degrees
Number of IR LED	36LEDs
Max Night Vision Lighting Distance	65ft/20 meters
Trigger Speed	0.5second
Triggering Interval :	1/5/10/30sec/min (default 1 sec)
Selectable Image Resolution:	16MP/12MP/8MP
Multiple Photo on one detection	1/3/6/9
Video Resolution	1080P/720P/VGA
File Format	JPEG/AVI
Date Time Imprint	Yes
Time lapse	Yes
Stand-by current	0.2mA
Stand-by time	6 Months
Power Supply	8×AA external power supply 9v DC
Water proof	IP56
Security authentication	FCC,CE,RoHS

## 6. Pack list

