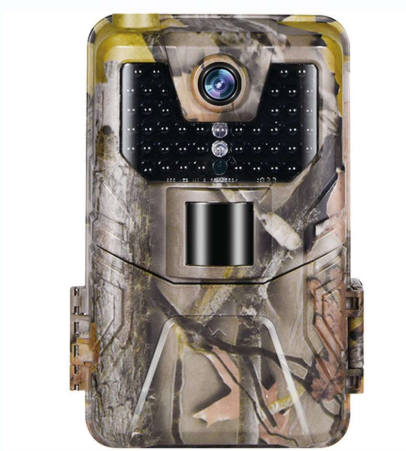


# SPECIFICATIONS

# TRAIL CAMERA

HC900A



USER MANUAL

**36MP**

Image

**2.7K**

Video

**0.3s**

Fast trigger time

**120°**

Detection angle

## Photo recording

Photo resolution	36/24/20/16/12/8/5/3/1MP
File format	JPG
Time lapse mode	5min/30min/60min
Multi-shot mode	Up to 9 photos per detection
Stamp (photos and video)	Date, time, temperature (°C/°F) and moon phase
Capture mode	Color by day, black and white by night

## Video recording

Video resolution	2688 x 1520/20fps (FHD)
File format	AVI/H.264
Sequence length	Adjustable from 10 to 90 s
Capture mode	Color by day, black and white by night

## Audio

Sound recording	N/A
(automatically recorded in video mode)	

## Memory storage

Support	<ul style="list-style-type: none"> <li>•Internal memory: none</li> <li>•External memory : SD/SDHC card (up to 64 GB)</li> </ul>
---------	---

1

## Viewing

Built-in screen	TFT 2.0"
-----------------	----------

## Power source

Alkaline or lithium batteries	8 x AA
External (3.5X1.5mm Jack)	DC12V 1000mA ,(6V~12V)

## Detection system

Motion sensor	Single PIR
Detection angle	120°
Detection range	25 meters/ 75ft
Trigger speed	0.3 sec
Delay between each detection	Adjustable from Instant to 30 min

## Night time illumination system

LEDs	44 LEDs
Flash range	<25 meters / 75ft
Exposure	Automatic infrared level adjustment

## Optical field of view

120°

## Dimensions

150mm X 100mm X 60 mm

## Recommendations

Operating temperature	(-30 °C to + 50 °C) (-22 °F to +122 °F)
Storage temperature	(-40 °C to + 60 °C) (-40 °F to +140 °F)

2

## High power invisible LED



3

# INSTALLING BATTERIES

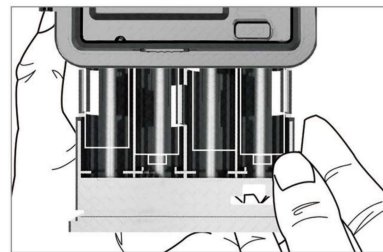
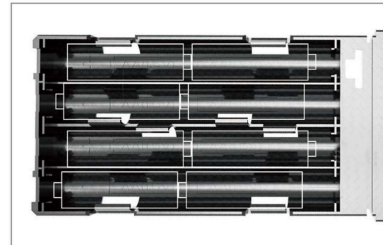
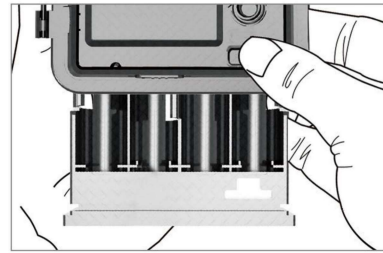
## IF USING AA - ALKALINE BATTERIES

1. Press EJECT, the battery box will pop out

2. Insert the AA batteries accordingly as indicated by the positive and negative battery icons

3. Slide the battery compartment back into the camera housing until it is completely engaged in the slot in the bottom of the housing

NOTE: Installing any of the 8-AA batteries in the wrong direction may cause the batteries to leak acid and could possibly explode, causing camera failure and damage to the battery compartment.



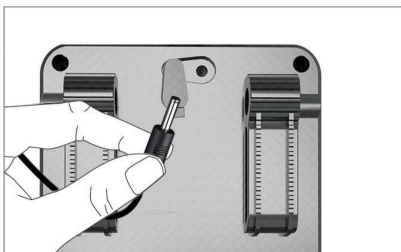
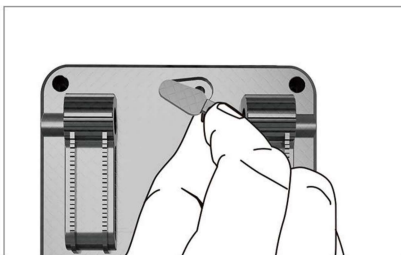
# BATTERIES CONT.....

## IF USING 12V DC POWER SOURCE

1. Remove the rubber port cap at the bottom of the camera .

2. Using a universal 12V DC cord, plug in to the bottom port option.

3. When not in use, replace the rubber port cap at the bottom of the camera to protect the 12V DC universal plug-in port.



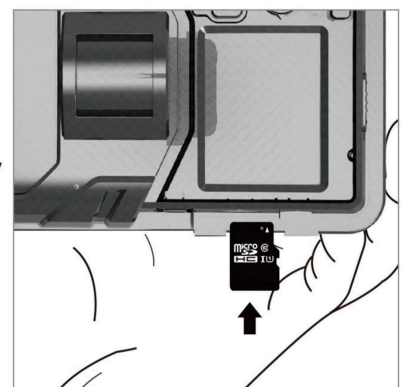
# MEMORY CARD INSTALL

## INSTALL MICRO-SD CARD

1. Insert the Micro SD card (Max 64 GB) with the contacts facing away. The Micro SD card should slide in freely with little resistance. Continue pressing the card inward until you hear a click. This means the Micro SD card is locked in place and ready for use.

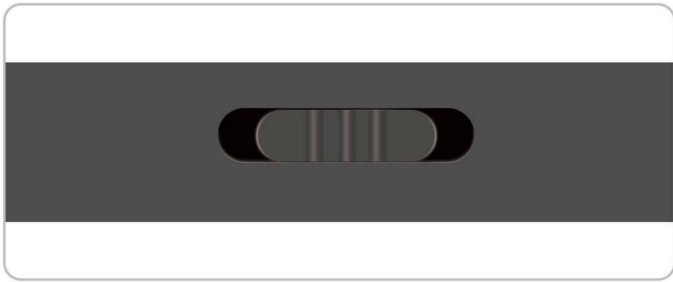
2. To remove Micro SD card, press the card inwards to release.

Caution: we recommend class6 & above high speed memory card, cheap memory card may damage the pictures and videos



## Power on

Slide Power Switch from OFF to TEST, camera screen power on (don't slide it from OFF to ON directly)



## CONTROL PANEL

### Under TEST Mode

- Press **MENU** to launch the system menu or exit.
- Press **SHUTTER** to manually trigger the shutter. A photo or video (depending on the mode) will be taken and saved to the memory card.
- The Rocker has 5 functions: **LEFT**, **RIGHT**, **UP**, **DOWN** and **OK**
- Press **RIGHT** to review photo or video, **UP / DOWN** to browse the pictures and videos and

8

- Press **LEFT** to start and stop Video, Press **SHUTTER** to exit.



### ON

In this mode, the screen power off and The camera works automatically. Will capture if detected any motions by PIR.

9

### Parameter

Photo Resolution	36/24/20/16/12/8/5/3/1MP
Video Resolution	1520/1080/720/480/VGA
Detection Angle	Up to 120°
Detection Distance	25 meters/75ft
Fill Light LED Wavelength	940nm (No Glow)
Fill Light LED Quantity	44 pcs
Trigger Time	0.3S
Waterproof Level	IP67
Working Temperature	-4°F - 160°F
Memory Card Type	Up to 64G TF Card (Class 10)
Power Supply Type	Battery/External
Battery Type	AA Battery
Working Voltage	12V
External Power Supply	DC12V
Standby Time	Up to 6 Months
Photo Format	JPEG
Video Format	AVI
Screen Size	2.0 Inches
Size	150x100x60MM
Weight	0.38 kg

••

10

### Function

Mode	You could choose the working mode	Photos (default) Videos Photos & Videos
Photo Resolution	You can choose different photo resolution	36MP 24MP 20MP 16MP 12MP 8MP 5MP 3MP 1MP
Photo Series	You can set the photo quantity when the camera is activated	1 photo (default) 2 photos in series 3 photos in series 10 photos in series
Video Resolution	You can choose different video resolution	2688*1520P (default) 1920*1080P 1280*720P 848*480P 720*480P 640*480P
Video length	You can choose the length of video	3 seconds to 10 min.
Audio Recording	You can decide if you want the camera to record sounds	On (default) Off
Shot Lag	The time interval between each trigger <sup>(1)</sup>	5 seconds (default) to 60 minutes max.

11

Side Motion Sensors	You can turn On / Off Side Motion Sensors	On / Off
Sensitivity Motion Sensors	You can adjust the sensitivity of the motion detection sensor.	Low Middle (default) High
Target Recording Time <sup>(2)</sup>	You can set the camera to record between a certain period	On (to set the period) Off (default)
Time Lapse	Set up time lapse mode and the length of the lapse.	On / Off (default)
Language	To set different language	English (default), Deutsch, Dansk, Suomi, Svenska, Español, Français, Italiano, Nederlands, Portugués, 简体中文 繁體中文 日本語
Endless Capture	If Endless Capture mode is on, the camera won't stop recording when the memory card is full but will delete the oldest videos or photos to keep recording continuously	On Off (default)
Time & Date	To set time and date. You can also choose the time format (24h or 12h) and choose the date format (dd/mm/yyyy, yyyy/mm/dd or mm/dd/yyyy)	Set Time & Date Time Format Date Format

12

### Camera to ON Mode

When you complete all the setting, slide switch to "ON" mode, after Red flash for 5 seconds, then the camera will start to work.

- **Cautions:** camera display and control panel will be useless when camera at "ON" mode, you need to slide switch back to "TEST" mode to preview the pics.

## TROUBLE SHOOTING

### Camera Doesn't Capture Subject of Interest

- Check the PIR sensitivity. For warm environmental conditions, set the Sensor Level to "Low" and for cold weather use, set the sensor for "High".
- Try to set your camera up in an area where no heat resources are in the camera's field of view.
- In some cases, set the camera near to water will make the camera take images with no subject in them.
- Try to aim the camera over ground.
- Try to set camera on stable and immovable objects, i.e.: large trees.

14

Photo Stamp	To choose if there will be time and date on the photo.	Time & Date (Default) Date Off
Password Protection	Set up password to secure your camera	On Off (default)
Format Memory Card	Decision with caution! You will lose all of the data in the memory card if you decide to format it	Yes No (default)
Serial NO	To set up the serial number of the camera <sup>(3)</sup>	On Off (default)
Reset Settings	Reset all the settings to the original settings	Yes No (default)
Version	Version of the system	

(1) For example, we set the 1 minute video length and 30 seconds shot lag. When the camera detect an animal, it will start to record a 1-minute video. However, the camera will not detect continuously. When the video is done, the camera will not detect immediately. It will detect again 30 seconds after the video in order to save the battery.

(2) "Target Recording Time" is equivalent to Timer. The camera only works within the set time period.

(3) If you use several cameras at the same time and you want to recognize which camera took which photos and videos, set up a serial number could help you. The serial number will show on the bottom right of the photos or videos.

13

- At night, motion detector may detect beyond range of the IR illumination, reduce distance setting by adjusting sensor sensitivity.
- Rising sun or sunset can trigger sensor. Camera should be reoriented.
- If person/animal moves quickly, it may move out of the camera's field of view before photo is taken. Move camera further back or redirect camera.

### Camera Stop Taking Images

- Please make sure that the memory card has enough memory storage. If the card is full, camera will stop taking images.
- Check batteries to make sure that alkaline, NIMH or lithium AA batteries left power is enough for camera to work
- Make sure that the camera power switch is at the "On" position and not at the "Off" or "Test" modes.
- Please format the memory card when you first time to use it or change to use another memory card

15

# WARRANTY

## Night Vision Flash Range Doesn't Meet Expectation

- 4pcs AA batteries is not able to support camera night vision ability, please install 8 pcs AA batteries for better battery life
- make sure that batteries are fully charged or left power is enough.
- High-quality 1.5V NIMH or Lithium rechargeable AA batteries can offer much better Infra flash range than alkaline batteries.
- To ensure accuracy and quality of night image, please try to mount camera on dark environment without obvious light sources.
- To ensure accuracy and quality of night time image, please mount camera to dark environment without any obvious light sources;
- Certain surroundings (like trees, walls, ground, etc.) within flash range can get you better night time images; please do not aim camera to total open field where there is nothing within IR flash range to reflect flash back, it's like shinning a flashlight into sky in night, you just can't see anything, same does camera.

With great pride and full confidence in products, we always keep our words which are given to our customers as specified warranty terms and services below. Based on a strict QC system, we initially offer all our customers one-year long time limited warranty.

Our products are warranted against defects in materials and workmanship for a period of one year from the date of original purchase. If a defect exists, we will, at our option and to extent permitted by law will

- (1) repair the product at no charge using new or refurbished parts;
- (2) exchange the product with a functionally equivalent product that is new or refurbished.

This warranty excludes damage from abuse, accident, modifications or others that are not defects in materials and workmanship. This warranty only covers failures due to defects in materials or workmanship under normal usage. To obtain warranty service, please contact us to determine the nature of problem before return the product under this warranty (with a written description of the problem and print samples) for repairing or exchanging.